



DECOMPRESSION TABLE DOC E9011



Table Shown
With Options



Lateral Flexion



Axial Rotation



P-A Flexion



Adjustable Headpiece

DECOMPRESSION OF CHOICE

Take your Chiropractic practice to the next level with Eurotech's DOC Decompression Table. The unique design of the new DOC table utilizes a state-of-the-art digital command center for specific vertebral targeting, separate lumbar and cervical decompression programming and continuous readout and graphing of treatment protocols. In addition, the digital command center also controls table elevation and rear flexion, all at the push of a button.

Spinal decompression is defined as vertebral unloading with spinal positioning.
Spinal decompression may not be an alternative for spinal surgery.



Axial Rotation and Lateral Flexion can be done simply with the press of a button and manipulation of the guide bar at the rear of the pelvic section. The doctor or practitioner can move the flexing section to its proper position such as lateral flexion or axial rotation. This is unlike other units that have a direct and straight pull only. In addition, this system comes with P-A flexion capabilities.

HOW IS SPINAL DECOMPRESSION DIFFERENT THAN TRACTION?

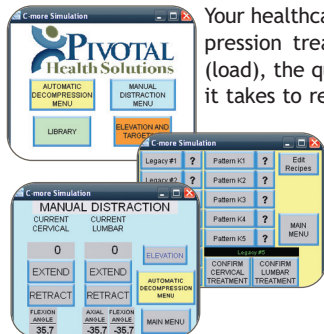
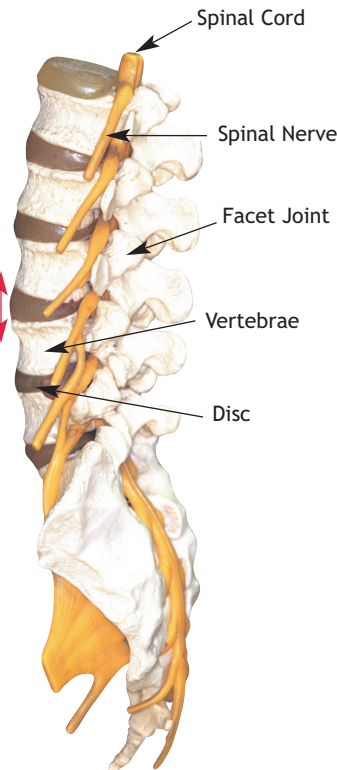


Regular traction stretches your spine and muscles simultaneously. If you only stretch the spine, your body naturally “braces” for the next stretch reducing the ability for the treatment to be effective. This “overall stretching” commonly used in traction can also trigger painful muscle spasms.

Decompression therapy is different than conventional spinal traction^{2,3}, it alternates between stretching and relaxation. The relaxation stages trick your body into staying relaxed and therefore maximizes the load and the effectiveness of the treatment.

Decompression tables should also allow your doctor or therapist to target your treatment area in three different dimensions. This isolates specific spinal discs and allows them to “target” their treatment, while traction often just “stretches” the entire spine.¹

Increased disc height, relieves pressure on nerves and other structures.



Your healthcare provider can completely customize your decompression treatment. They can change the amount of stretch (load), the quantity of stretch/relax stages, the amount of time it takes to reach each peak stretch/relax stage and many other settings.

This allows them to personalize the session for your age, weight and condition and to adjust your treatments as they track your results.

REFERENCES

1. Decompression: A Treatment for Back Pain, Occupational Medicine Clinical Care Update , Volume 11, Number 10 October 2004
2. Ramos, G. and Martin, W. Effects of vertebral axial decompression on intradiscal pressure J Neurosurgery, 81: 350-353 1994
3. Shealy, C.N. and Leroy, P. New concepts in back pain: decompression, reduction, and stabilization Weiner R ed. Pain Management: A Practical Guide for Clinicians, Boca Raton Fla: St. Lucie Press, 239-257 1998

E9011 CUSTOM TABLE OPTIONS

- E46400 Printer
- E46500 Elevation foot pedal
- E46510 P-A Flexion foot pedal
- E9011-W White table base
- Snap on upholstery covers
- WSP Marketing Package - call for details

DECOMPRESSION TABLE FEATURES

The DOC list of standard features is impressive:

- Digital (DOC) Command Center which includes:
 - Specific vertebral targeting
 - Separate lumbar and cervical decompression programming
 - Continuous readout and graphing of treatment parameters
 - Interactive color display
- Pre-programmed lumbar and cervical decompression protocols
- Customizable treatment protocols
- Traction belting system - Can enhance restraint for optimal decompression. This helps the body reduce internal disc pressure which aids in the reduction of spinal problems
- Built-in safety features
- User-defined treatment hold and relax times
- Real-time digital treatment tracking
- Table elevation
- Reference library - including patient setup and training materials
- CD player with AM/FM radio and headphones for patient relaxation
- Comfort bolsters
- Cervical capture headpiece

TECHNICAL SPECIFICATIONS

- Table Dimensions: 77" L x 30" W x 21" H
- Shipping Dimensions: 88" L x 41" W x 47" H
- Shipping Weight: 550 lbs
- Retracted length 77"
- Extended length 86"
- Max length with touch screen arm 92"
- Pelvic cushion width 27"
- Thoracic/Lumbar cushion width 24"
- Cervical cushion length 17"
- Hand pad to hand pad width 30"
- Hand pad to touch screen arm (max width) 44"
- Standard height to top of cushion (min) 21"
- Standard height to top of cushion (max) 29"
- Standard height to top of touch screen arm 36"
- Power consumption: 115V 60 Hz
- Current consumption: 5 Amps Max